

## Golden Sun Moth *Synemon plana*

When to look:

*October to January on warm sunny days*

### *Similar species:*

There are no moth species that closely resemble the Golden Sun Moth

Clubbed antennae with a knob at the end

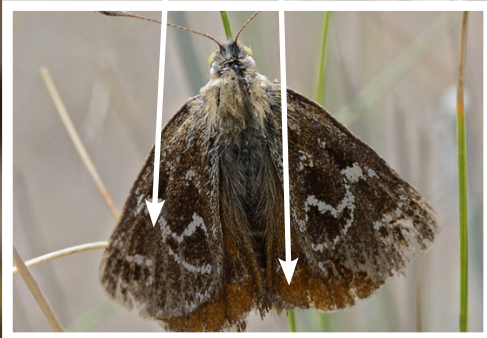
Female:  
Grey-brown forewings with pale grey scales

Bright orange hindwings with black spots near the edge

Male:  
Dark brown forewings with pale grey scales

Bronzy-brown hindwings with dark brown patches

Tip: Look for the male flying in a zigzag pattern about 1m above the ground and the female walking between tussocks of grass



*Images courtesy of Leo Berzins*