

# multi species *guide*

## At the beach



### Habitats:

Habitats on sandy beaches can be difficult to distinguish, however different species can more commonly be found in specific areas of the beach compared to others. The strand line (i.e. area where seaweed and shells are left 'stranded' by the high tide line) is a good place to look for jellies which get left behind after storm events or receding tides. Higher up the beach, invertebrates such as sand hopper can be found hiding underneath dried fragments of sea weed. Just below sand dunes, ghost crabs make their burrows in areas rarely inundated by high tides. Often coastal currents accumulate shells and other items in the corner of beaches and these areas are great at retaining cowrie shells. However, it's worth remembering that species can often be found out of their normal areas so make sure you search all available beach habitats.

Updated Feb 2014



[climatewatch.org.au](http://climatewatch.org.au)

[earthwatch.org.au](http://earthwatch.org.au)

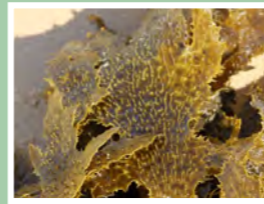
Use this scale bar in photos for reference and to assist in species identification



# Algae



*Durvillea potatorum*  
**Bull kelp**  
Low shore (strand-line)



*Eklonia radiata*  
**Common kelp**  
Low shore (strand-line)



*Hormosira banksii*  
**Neptune's necklace**  
Low shore (strand-line)



*Phyllospora comosa*  
**Strap weed**  
Low shore (strand-line)



*Codium fragile*  
**Velvet weed**  
Low shore (strand-line)

# Birds



*Haliastur indus*  
**Brahminy kite**  
Ocean/air/cliffs



*Haematopus longirostris*  
**Pied oystercatcher**  
Ocean/air/cliffs

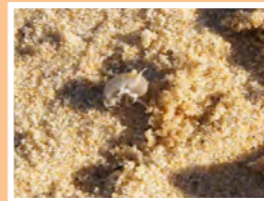


*Haliaeetus leucogaster*  
**White-bellied sea eagle**  
Ocean/air/cliffs

# Crustaceans



*Ocypode sp.*  
**Ghost crabs hole**  
Size: up to 5 cm  
Low shore (strand-line)  
- High shore (dunes)



*Talitridae sp.*  
**Sand hopper**  
Size: up to 1 cm  
Low shore (strand-line)  
- High shore (dunes)

# Jellies and Drifters



*Physalia utriculus*  
**Blue bottle**  
Size: up to 15 cm  
Low shore (strand-line)



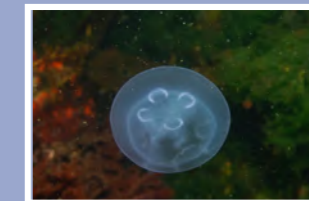
*Porpita porpita*  
**Blue button**  
Size: up to 3 cm  
Low shore (strand-line)



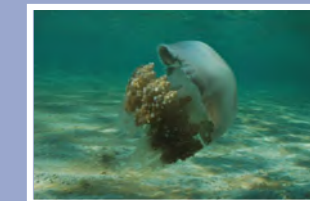
*Velella velella*  
**By the wind sailor**  
Size: up to 5 cm  
Low shore (strand-line)



*Catostylus mosaicus*  
**Jelly blubber**  
Size: up to 30 cm  
Low shore (strand-line)



*Aurelia aurita*  
**Moon jelly**  
Size: up to 30 cm  
Low shore (strand-line)



*Phyllorhiza punctata*  
**Spotted jelly**  
Size: up to 30 cm  
Low shore (strand-line)

# Whales



*Megaptera novaeangliae*  
**Humpback**  
Ocean/air/cliffs



*Orcinus orca*  
**Orca**  
Ocean/air/cliffs



*Balaenoptera musculus brevicauda*  
**Pygmy blue**  
Ocean/air/cliffs



*Eubalaena australis*  
**Southern right**  
Ocean/air/cliffs

Use this scale bar in photos for reference and to assist in species identification

Jelly blubber, Spotted jelly & Moon jelly

Sand hoppers

Scale 1cm