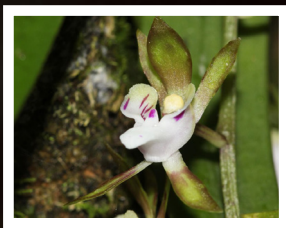


Butterfly Orchid *Sarcochilus australis*

When to look:

*Throughout year. Flowers
October to December*

Semi-pendulous epiphytic orchid.
5-15cm across, stems to 5cm long



1-4 pendulous
sprays of 2-17
pale yellowish-
green to brown
flowers, lip white
with yellow
tints and purple
stripes

*Images courtesy of Atlas of Life;
BettyDonWood and Bowerbird; Matt
Campbell (flower inset)*